

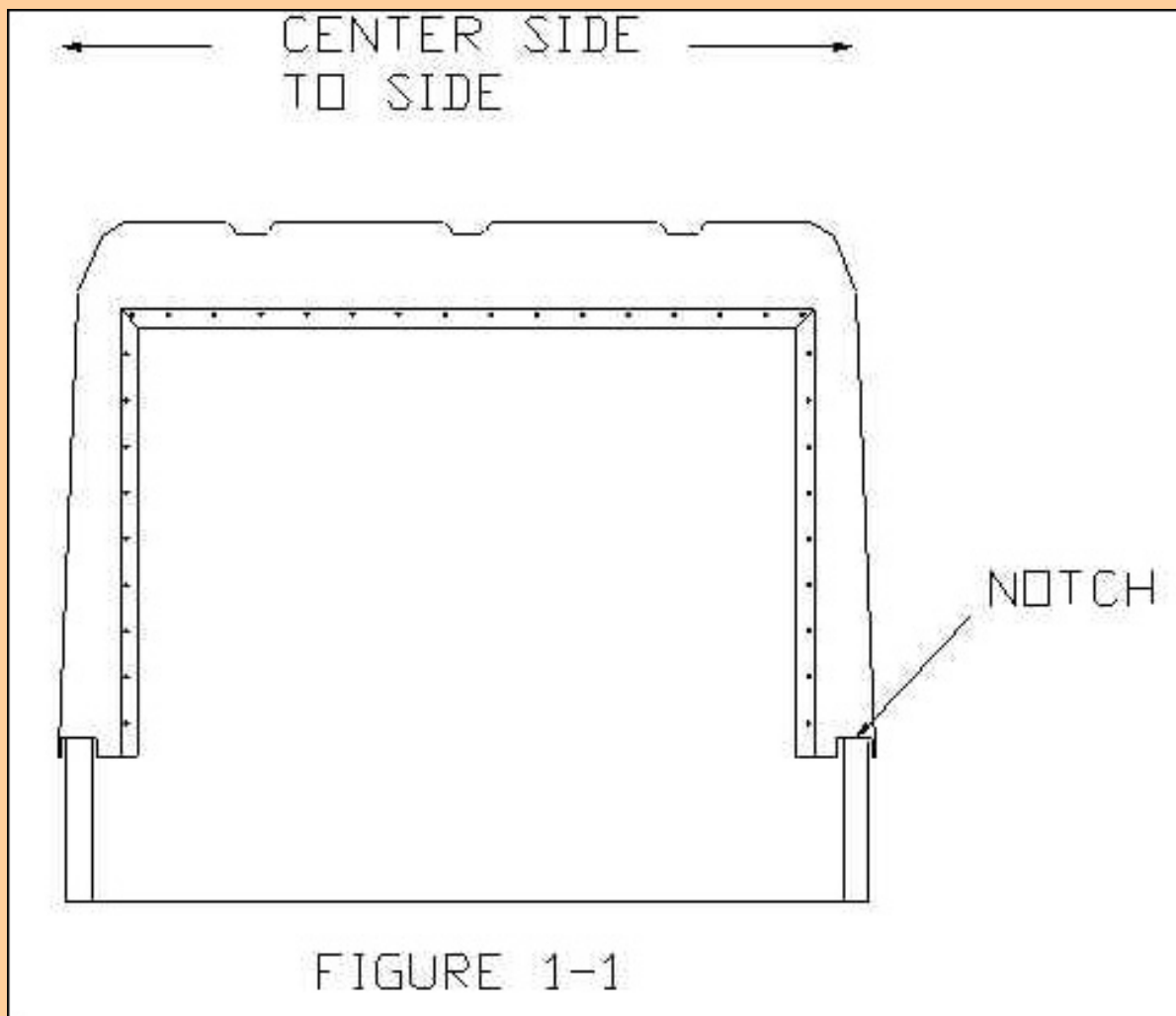
## M101

Notice where the top will interface with the trailer. The small ledge inside the hardtop will rest on top of the trailer. The seven L-brackets inside the hardtop will also rest on top of the trailer. The front and sides of the hardtop will fit over the outside perimeter of the trailer. The rear doors will rest against the inside of the tailgate. These areas will need to be free of obstructions prior to installing the top

### Installation

All of the hardware provided for mounting the top is stainless steel. **NEVER-SEIZE SHOULD BE USED TO PREVENT THE HARDWARE FROM GALLING.**

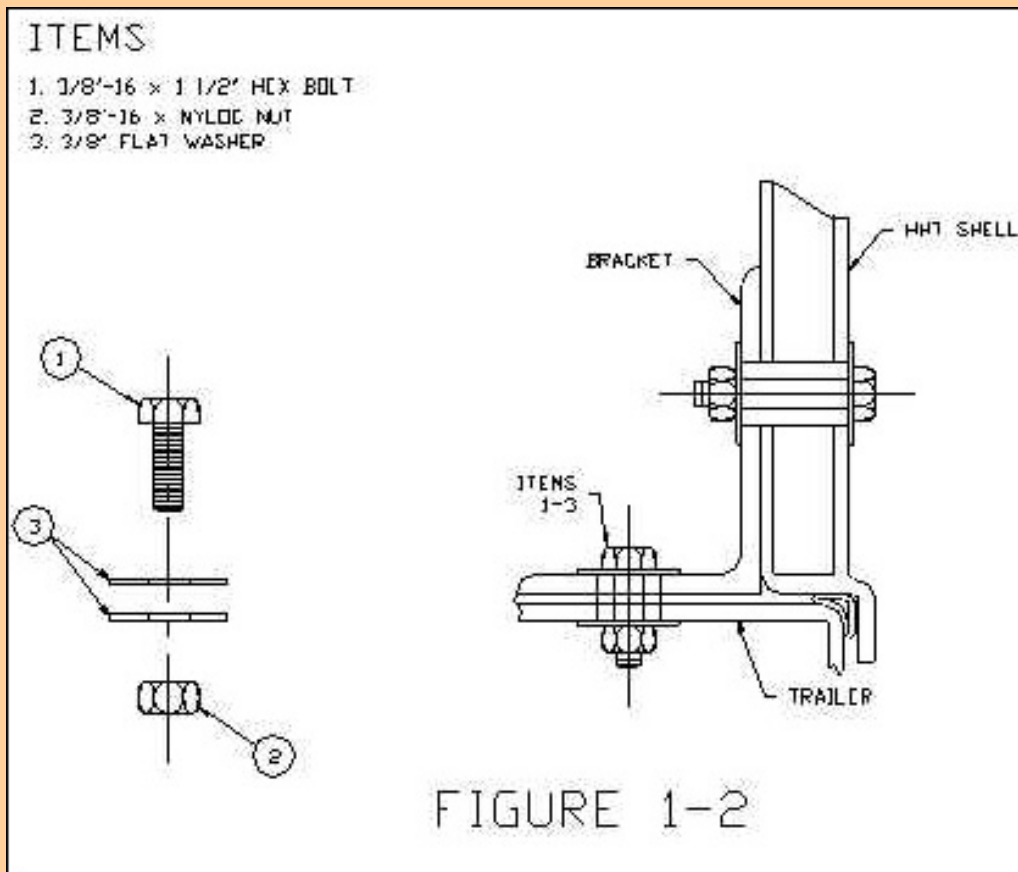
1. The hardtop rear doors are equipped with lift-off hinges. The doors should be removed prior to placing the top onto the vehicle.
2. There are 4 corner L-brackets (the wider brackets located near each corner of the top) and 3 mid L-brackets (the narrower brackets located near the midpoint of the sides and front of the top), attached to the inside of the hardtop. Loosen the hardware that attaches these brackets to the top so that they are free to slide up and down.
3. Carefully lower the top onto the trailer. The notches in the rear of the top will fit over the sides of the trailer. Insure that the top is centered on the trailer, side to side. The rear of the hardtop should be well inside the tailgate. See figure 1-1.



4. Reinstall the hardtop rear doors. Close the tailgate on the trailer. Slide the top towards the rear of the trailer until the hardtop rear doors are firmly seated against the inside of the trailer tailgate.

5. Next you will want to secure the two forward corner L-brackets to the trailer. Tap the L-brackets down until they contact the trailer. With a  $\frac{1}{2}$ " drill bit, drill through L-bracket slots and the top of the trailer. When possible drill through the center of the trailer rail. Fasten the L-brackets to the vehicle with (4 ea.)  $\frac{1}{2}$ "-16 x 1- $\frac{1}{2}$ " hex bolts, (4 ea.)  $\frac{1}{2}$ "-16 nyloc nuts, and (8 ea.)  $\frac{1}{2}$ " flat washers. Tighten the bolts that secure the forward corner L-brackets to the trailer. See figure 1-2.

6. Check alignment of the hardtop rear doors. When the hardtop rear doors are closed the gap between them should be even top to bottom. The gap between the top of the doors and the frame should also be even. The sides of the top can be move inboard or outboard until even gaps are achieved. With doors properly aligned secure the two rear corner L-brackets to the trailer. Tap the L-brackets down until they contact the trailer. With a  $\frac{1}{2}$ " drill bit, drill through L-bracket slots and the top of the trailer. When possible drill through the center of the trailer rail. Fasten the L-brackets to the vehicle with (4 ea.)  $\frac{1}{2}$ "-16 x 1- $\frac{1}{2}$ " hex bolts, (4 ea.)  $\frac{1}{2}$ "-16 nyloc nuts, and (8 ea.)  $\frac{1}{2}$ " flat washers. Tighten the bolts that secure the rear corner L-brackets to the trailer. See figure 1-2.



7. Secure the three mid L-brackets to the trailer. Tap the L-brackets down until they contact the trailer. With a 1/4" drill bit, drill through L-bracket holes and the top of the trailer. When possible drill through the center of the trailer rail. Fasten the rear L-brackets to the vehicle with (3 ea.) 1/4"-20 x 1" hex bolts, (3 ea.) 1/4"-20 nyloc nuts, and (6 ea.) 1/4" flat washers. Tighten the bolts that secure the mid L-brackets to the trailer. See figure 1-3.

# ITEMS

- 1. 1/4-20 x 1" HEX BOLT
- 2. 1/4-20 NYLOC NUT
- 3. 1/4" FLAT WASHER

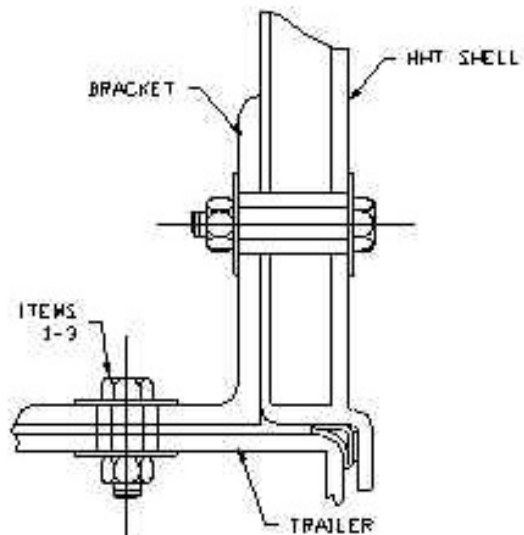
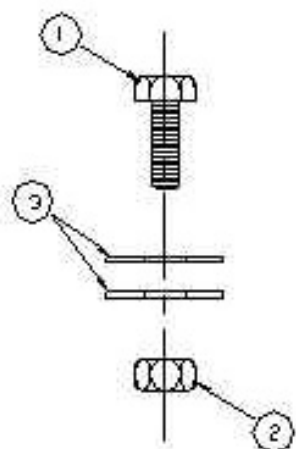


FIGURE 1-3



